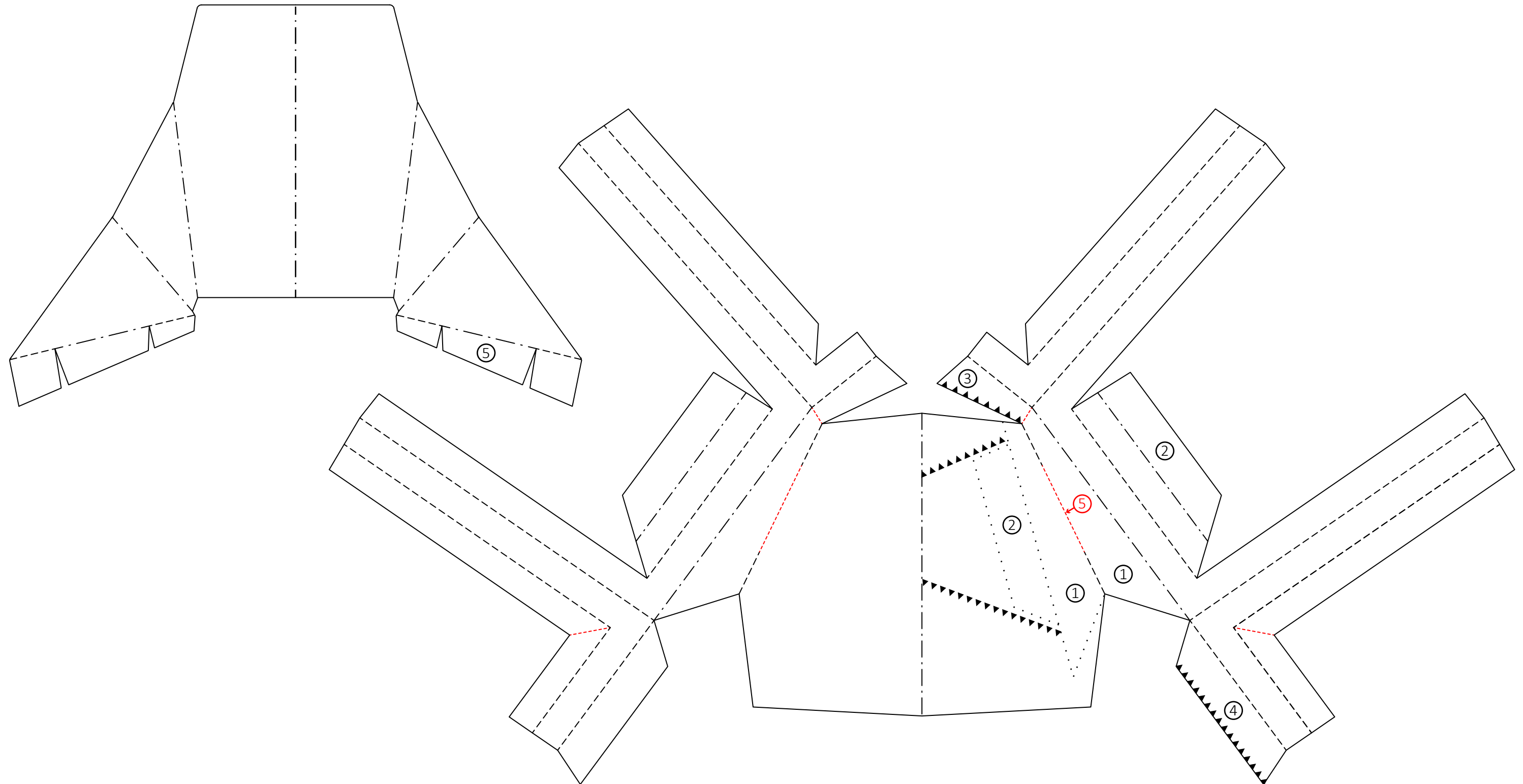
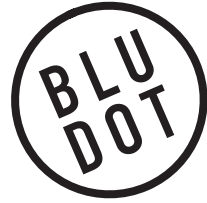


# Build your own Real Good Chair!





## INSTRUCTIONS:

1. Score along fold lines using a ruler and a bone folder.
2. Carefully cut out the shapes with scissors.
3. Make cuts with X-Acto blade where marked in red.
4. Gently crease along all scored lines.
4. Fold so that (1) aligns with (1) and tape or glue in place.
5. Fold so that flap (2) aligns with (2) and tape or glue in place.
6. Align marks on the edge of flap (3) with the corresponding marks on the seat. Tape or glue in place.
7. Align marks on the edge of flap (4) with the corresponding marks on the seat. Tape or glue in place.
8. Insert back tab (5) into slit made previously in the base. Tape or glue the exposed flaps to the underside of the seat.
9. Sharpen any folds as needed to make the model symmetrical.

## SYMBOLS:

