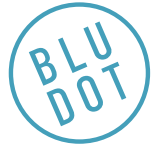
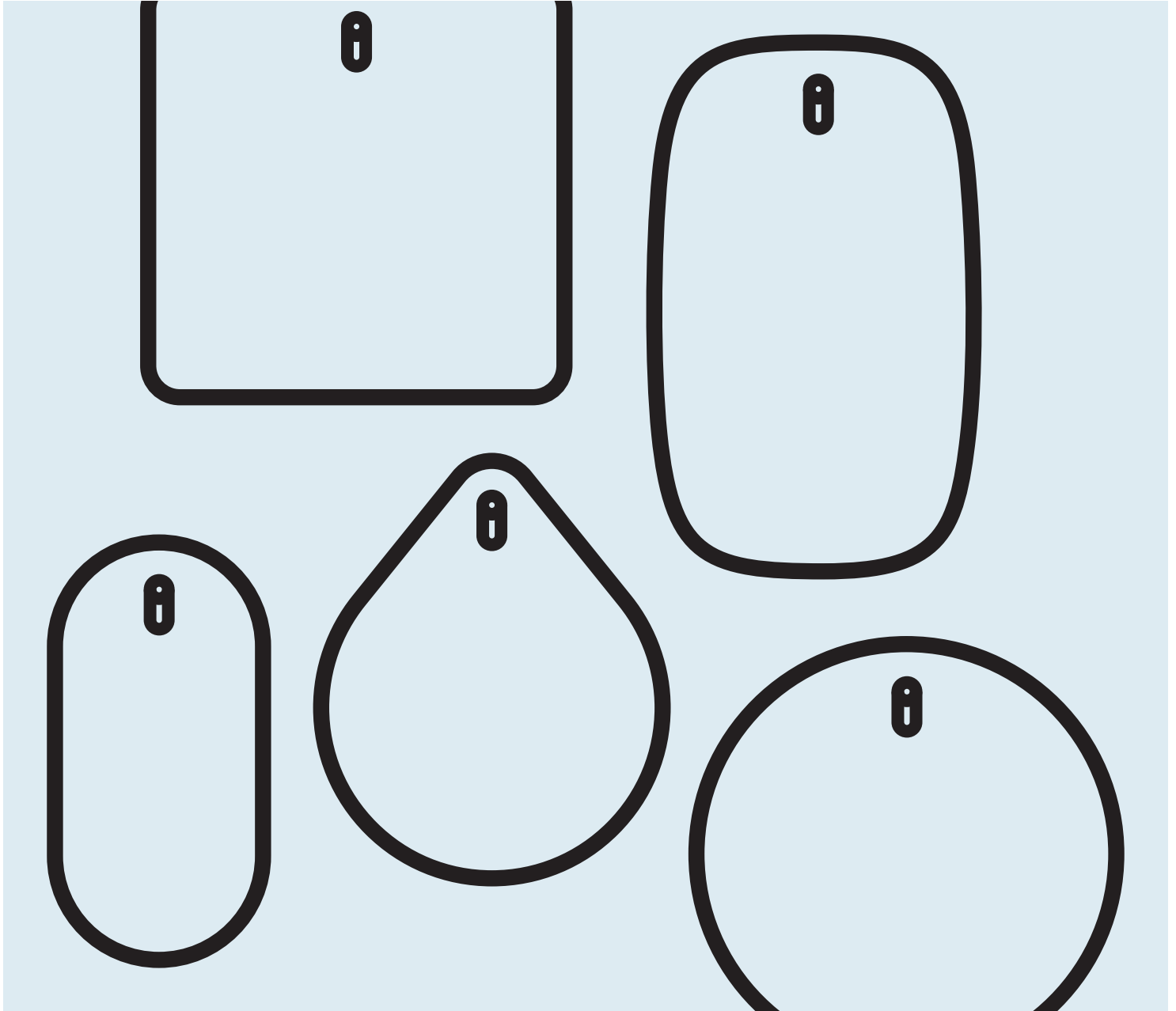


# Hang 1 Mirror Collection



DESIGNED IN 2016

ASSEMBLY NOTES | REV 01



## NEED A HAND?

Contact us at [service@bludot.com](mailto:service@bludot.com) or **844.425.8368** for assistance.

## @BLUDOT

We design all our pieces in our Minneapolis studio. Follow along on Instagram for some sneak peeks into the process.

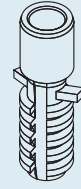
# Parts & Hardware



QTY 1

---

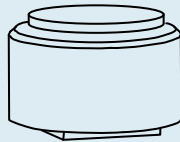
Pt. 1202



QTY 1

---

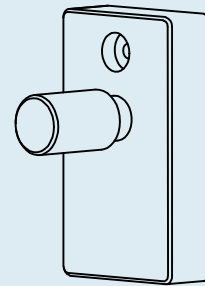
Pt. 8036



QTY 3

---

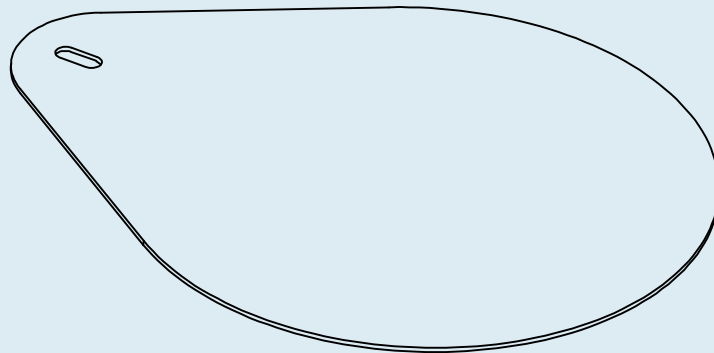
Bumper



QTY 1

---

Wall Peg



QTY 1

---

Mirror\*

\*Mirror shape may vary depending on the size/shape that was purchased.

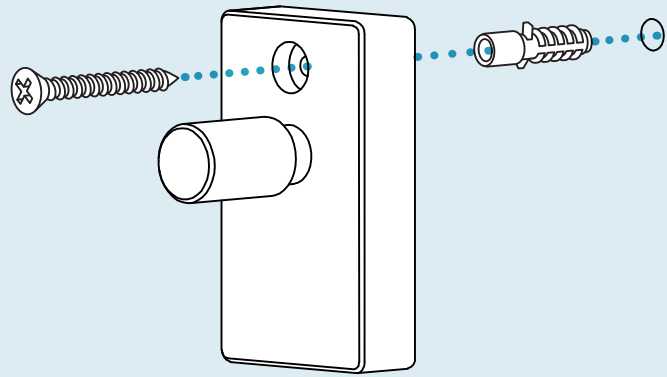
# Step 01

## ATTACH WALL PEG

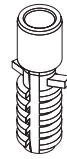
An anchor and fastener are included for installation. Please consult your local hardware professional to determine the hardware best suited for your wall type.

If the mounting location is not positioned on a stud, drill a **5/16"** hole in the marked location and insert anchor as shown. If the mounting location is located on a stud, this step of installing an anchor may be skipped. Instead, drill a **1/8"** pilot hole in the marked location.

Attach the wall peg to the wall using the included fastener as shown.



Pt. 1202 x 1



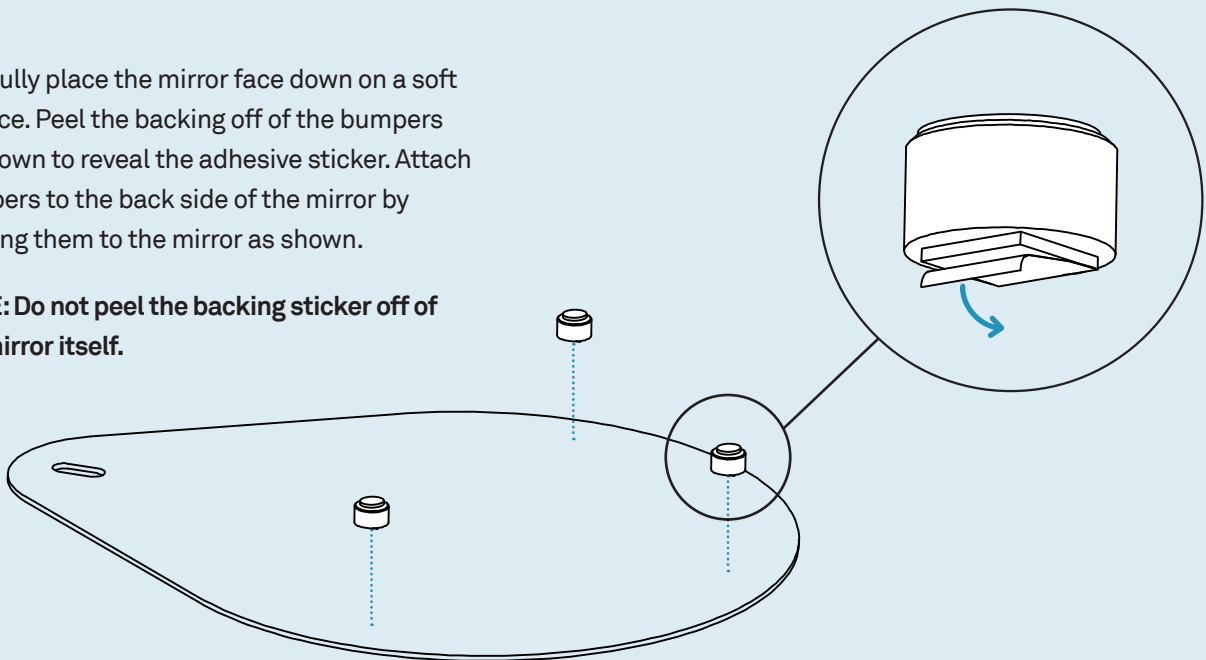
Pt. 8036 x 1\*

# Step 02

## ATTACH BUMPERS

Carefully place the mirror face down on a soft surface. Peel the backing off of the bumpers as shown to reveal the adhesive sticker. Attach bumpers to the back side of the mirror by sticking them to the mirror as shown.

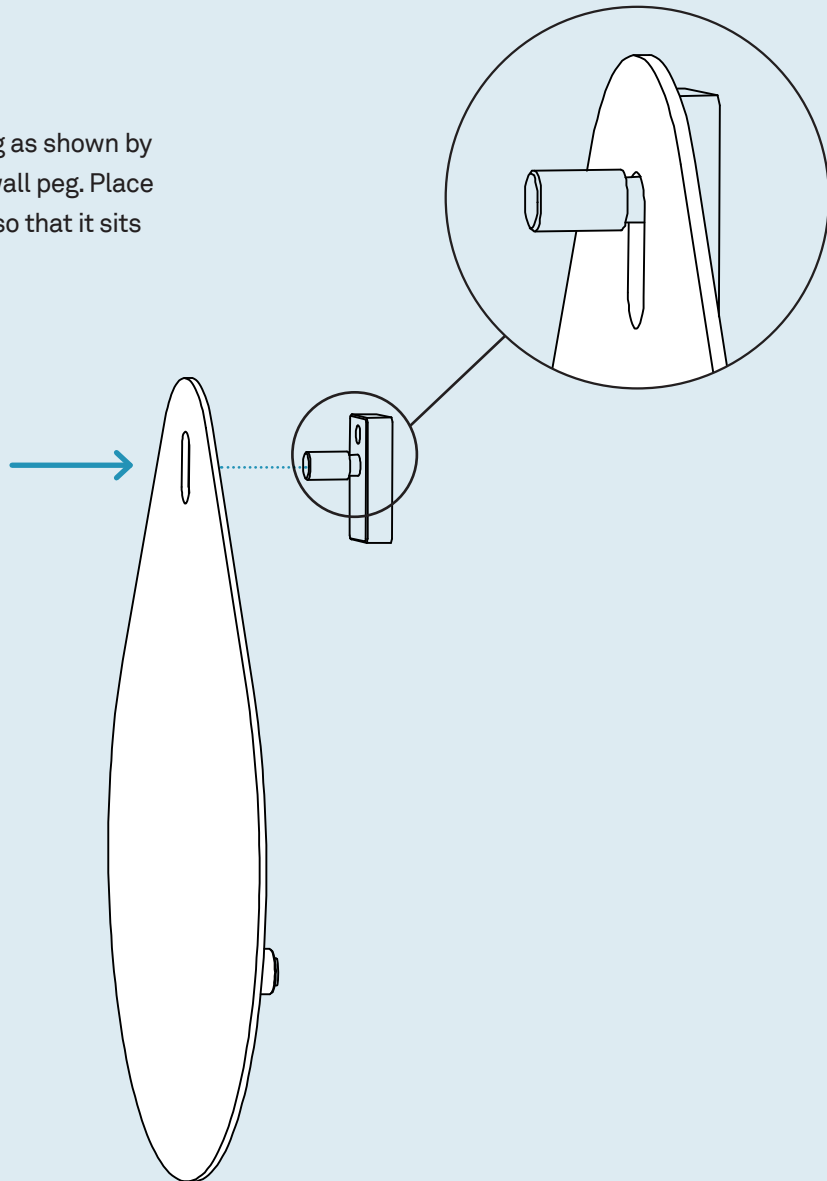
**NOTE: Do not peel the backing sticker off of the mirror itself.**



## Step 03

### MOUNT MIRROR

Place the mirror onto the wall peg as shown by aligning the mirror slot with the wall peg. Place the mirror at the back of the peg so that it sits securely within the groove.



## Additional Information

### CLEAN

Clean mirror with a slightly damp, soft cloth. To remove dirt and fingerprints, use a quality glass cleaner. Wipe completely dry with a soft cloth.

Clean wood with a slightly damp, soft cloth. To remove dirt and fingerprints, use a quality cleaner formulated for wood furniture. Wipe completely dry with a soft cloth in the direction of the wood grain.

