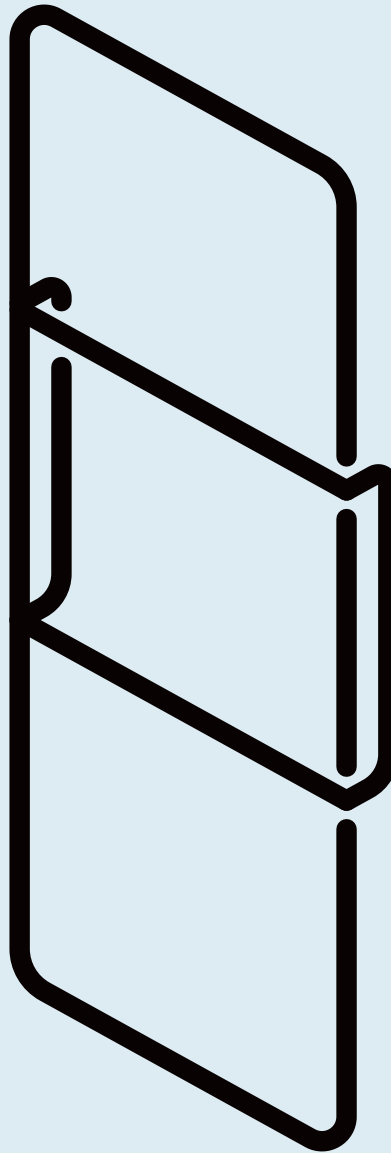


# Aside Storage Ladder



DESIGNED IN 2021

ASSEMBLY NOTES | REV 01



## NEED A HAND?

Contact us at [service@bludot.com](mailto:service@bludot.com) or **844.425.8368** for assistance.

## @BLUDOT

We design all our pieces in our Minneapolis studio. Follow along on Instagram for some sneak peeks into the process.

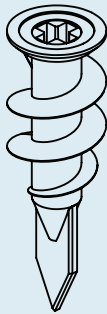
# Parts & Hardware



QTY

2

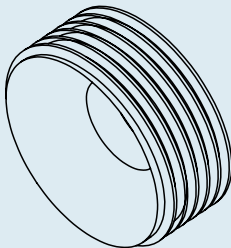
Pt. 2011



QTY

2

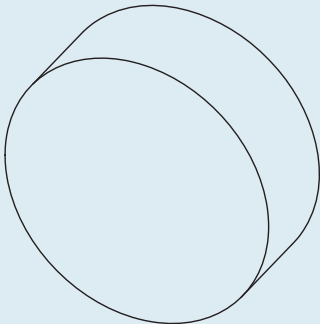
Pt. 8055



QTY

2

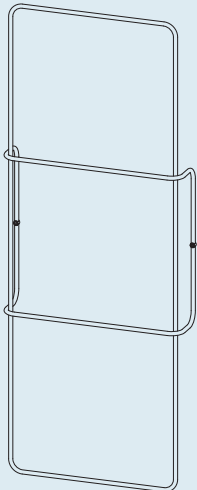
Collar



QTY

2

Cap



QTY

1

Ladder

# Step 01

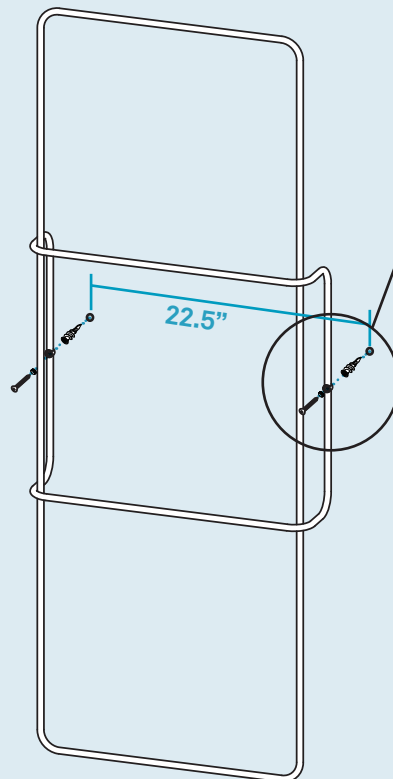
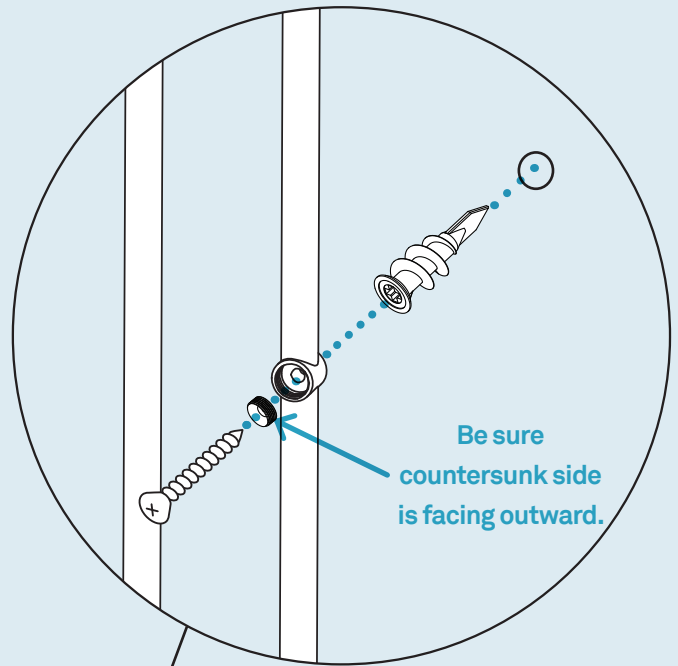
## HANG THE LADDER ON THE WALL.

Wall anchors and fasteners are included for installation. Please consult your local hardware professional to determine the hardware best suited for your wall type.

Mark the mounting locations spaced 22.5" apart, using a level to ensure that they are horizontal.

If the mounting location is not located on a stud, drill a 1/4" hole in the marked location and insert the wall anchor by twisting it clockwise. If one of the mounting locations are located on a stud, this step of installing an anchor may be skipped. Instead, drill a 7/64" pilot hole in the marked position.

Attach the wall screws, collar, and ladder in the order shown.



PT. 2011 X 2



PT. 8055 X 2

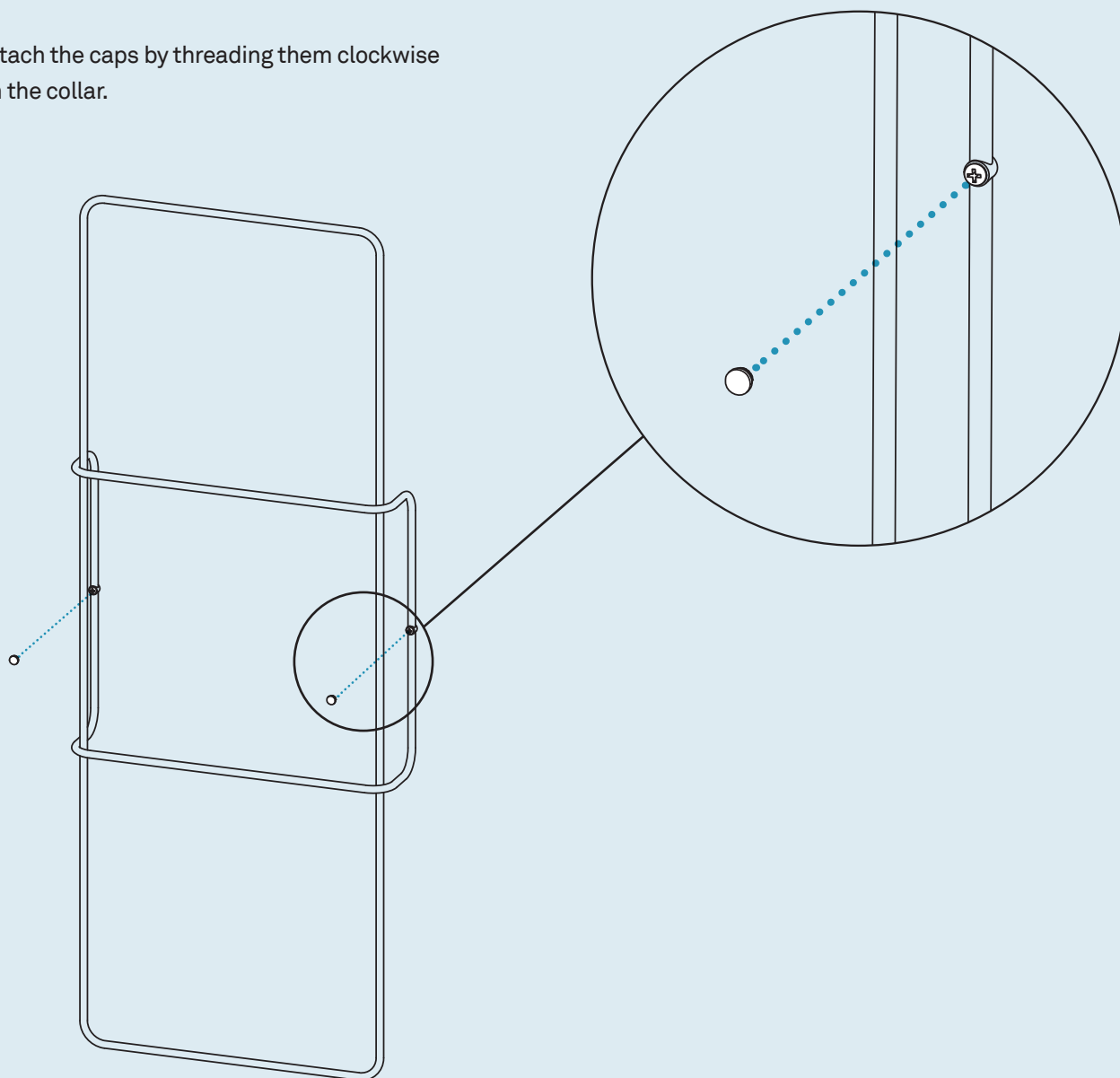


Collar X 2

## Step 02

### ATTACH THE CAPS.

Attach the caps by threading them clockwise on the collar.



## Additional Information

### CLEAN

Clean with a slightly damp, soft cloth. To remove dirt and fingerprints, use a quality cleaner formulated for metal furniture. Wipe completely dry with a soft cloth.